

3G-SDI to IP Encapsulator and Decapsulator Edge Devices



Edgware by Bluebell 3G-SDI to IP Encapsulator and Decapsulator range

The Edgware Encapsulator Module is a very simple yet powerful edge device that sits between the Broadcast world and IP Networks.

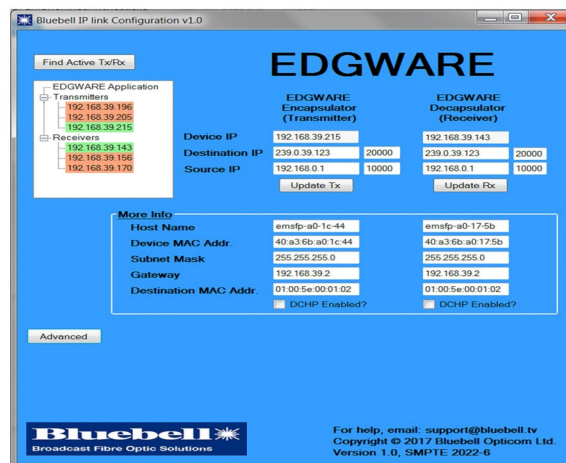
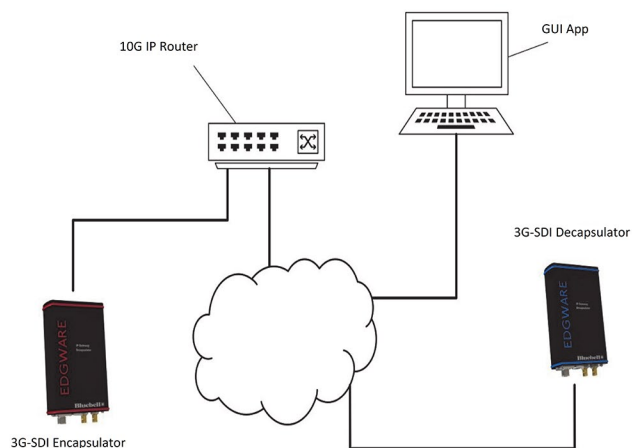
A single Channel of HD-SDI or 3G-SDI is wrapped in IP protocol and multicast over standard 10G Ethernet Networks.

A straight forward, easy to use, GUI allows the user to set up two IP addresses so the units will pass either compressed or uncompressed video between the Encapsulator and Decapsulator.

The Edgware modules can be configured for SMPTE 2022-6, 2022-7 or ST 2010. The code for each format is stored within the unit. A network command can reconfigure the transport protocol to the required setting.

This is a no nonsense easy to understand IP Gateway product. Perfect for traditional broadcast and film companies who wish to make the connection to IP and beyond.

Schematic Diagram Edgware



Specifications

Electrical Input

Standards	SMPTE 424M, SMPTE 292M, SMPTE 297M
Equalisation	Automatic to 100 m @ 3 Gb/s Automatic to 200 m @ 1.485 Gb/s Automatic to 300 m @ 270 Mb/s Equaliser and relocking can be bypassed to support data rates down to 50 Mb/s.
Connector	75 Ohm BNC per IEC 60169-8 Amendment 2
Return Loss	> 15 dB @ 1.485 Gb/s

Electrical Output

Connector	75 Ohm BNC per IEC 60169-8 Amendment 2
Return Loss	> 15 dB @ 1.485 Gb/s
Polarity	Non inverting
Signal Level	800 mV +/- 10%
DC Offset	0 +/- 0.5 V
Jitter	<0.15 UI line equalised
Format	Driven active loop out

Optical Output

Connector	1 x female LC as standard per channel
Wavelength	850 nm multimode
Sensitivity	> -25.0 dBm @ 3 Gb/s > -25.5 dBm @ 1.485 Mb/s > -26.0 dBm @ 270 Mb/s
Max I/P power	> -1 dBm
Data rate	270Mb/s; 1.485Mb/s, 3Gb/s

IP Interface

Connector	Duplex LC
Interface	Multimode Duplex SFP, 10G Ethernet
Encapsulation	SMPTE2022-6, SMPTE2022-7, ST2110, TR03
Compatibility	10GBase SFP+ 10G, 10GBase-LR, SFF-8431 SFP+

General Enclosure specifications

Depth	165 mm
Width	110 mm
Height	45mm
Weight	100 g
Operating Temp	-30 to +70 °C
Power	3 W

Conformance

EMI/RFI:	Complies with 89/336/EEC, EN55022B,
Electrical:	Complies with EN61000-6-1, EN61000-6-2,
Laser Safety:	Complies with Class 1 laser product 24 CFR 1040.10 & 1040.11
RoHS:	Complies with Directive 2002/95/EC
Warranty	5 years

Optical Output

Connector	1 x female LC as standard per channel
-----------	---------------------------------------

Ordering Information

Edgware IP Encap	Ruggedised Stand Alone Portable Encapsulator Interface. A single channel of SD-SDI, HD-SDI or 3G-SDI {with loop out} is wrapped up in IP wrappers and is multicast over a standard 10G network via multimode fibre on Neutrik OpticalCON DUO. Supports SMPTE 2022-6, SMPTE 2022-7 and SMPTE ST2110. Power via 12V input on XLR-4. Power supply included.
Edgware IP Decap	Ruggedised Stand Alone Portable Decapsulator Interface. A single channel of SD-SDI, HD-SDI or 3G-SDI (dual O/P) is decapsulated from the IP network via multimode fibre on Neutrik OpticalCON DUO.. Supports SMPTE 2022-6, SMPTE 2022-7 and SMPTE ST2110. Power via 12V input on XLR-4. Power supply included.



Bluebell Opticom Limited
Unit 2 The Quadrant
Howarth Rd
Maidenhead
Berks
SL6 1AP
UK

Tel: +44 (0) 1628 510055, Fax: +44 (0) 1628 510057
Email: sales@bluebell.tv Website: www.bluebell.tv