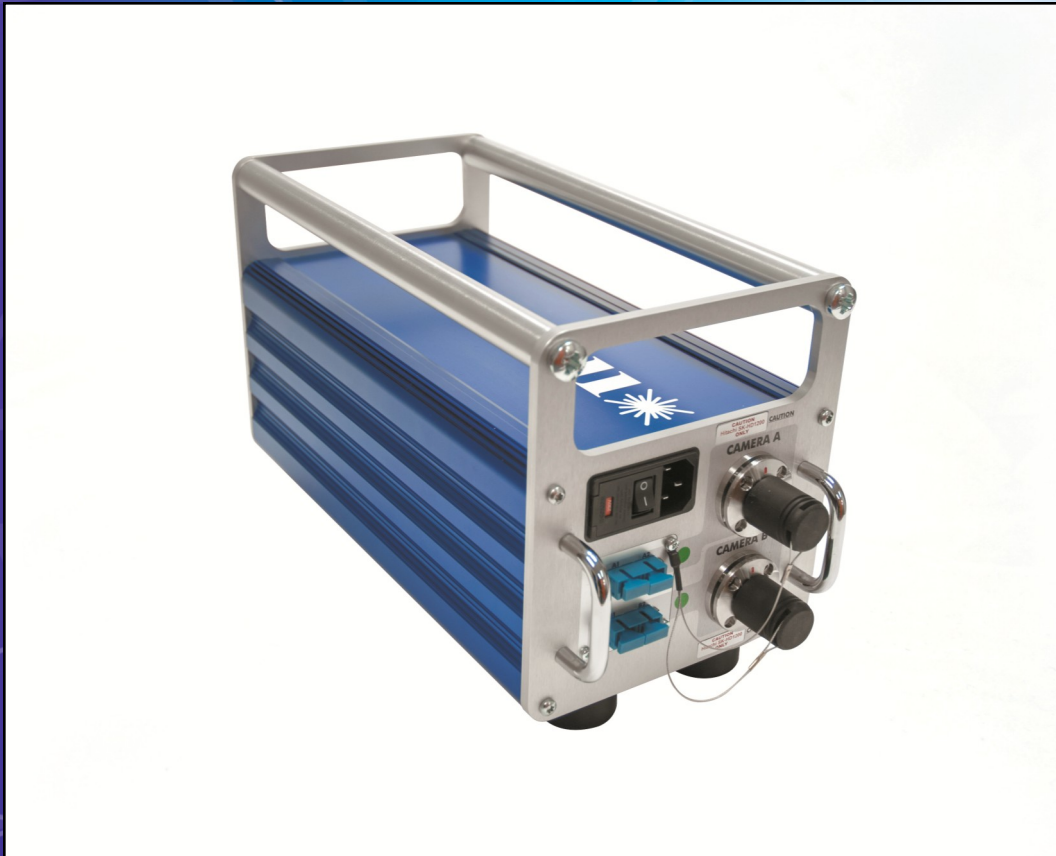


Bluebell

Deployable Optical Products for Outside Broadcast



ShaxX-DUAL

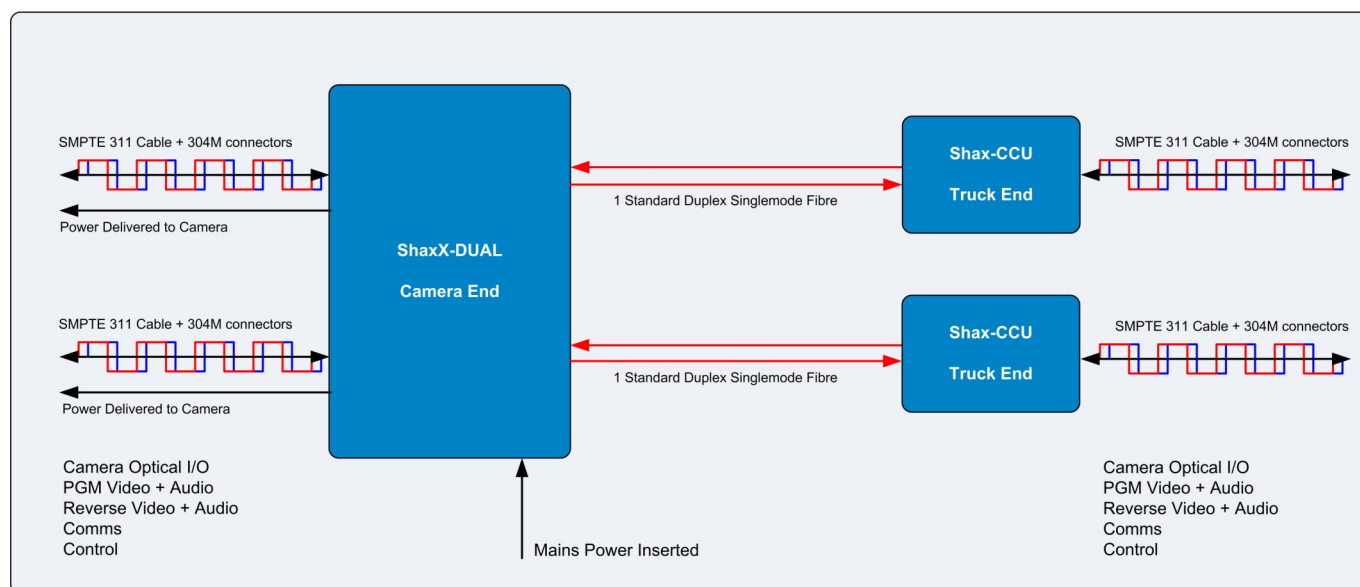
SMPTE Hybrid Alternative Connector Kit for Power Insertion

The ShaxX System from Bluebell has been designed to provide power insertion to broadcast cameras fitted with Standard SMPTE 304M hybrid connectors, thus allowing them to be remotely powered over the hybrid cable. The ShaxX-DUAL allows two cameras to be powered from one mains supply over their own individual hybrid cables.

Power can be inserted and transferred to the remote camera which can be up to 300m away. When combined with the Shax-CCU, cameras can be remotely deployed using the ordinary singlemode optical fibre network that may exist within a stadium. Shax-DUAL is switch selectable between major camera manufacturers for easy deployment.

This system allows the user to replace the fibre/copper hybrid cable between the camera and the CCU with standard fibre cable and relay all the communications and signals. This frees the camera from being tethered to a local mains supply. The ShaxX/Shax system is perfect for Stadiums, Arenas and Concert Halls that have pre-installed fibre networks.

The ShaxX-DUAL is enclosed in a robust and ruggedised aluminium enclosure, ideally suited to Outside Broadcast and Fly Away applications. The ShaxX can also be combined with the BC Series Multi-format Interfaces to carry signals from multiple cameras over a single cable. This can help reduce and simplify rigging and installation time. Contact the Sales Office for additional information on the available options. Front panel LEDs give instant operational feedback of the link status between each camera and CCU.



Specifications

ShaxX-DUAL

Optical I/O

Connector
Wavelength

Camera side

2 x Lemo PHW 3K.93C Free Socket
Independent

Optical I/O

Connector

2 x female ST, SC, FC per camera
See Ordering Information

Wavelength
Optical Loss

Independent
< 1 dB per end

Mains Input

IEC Mains Inlet

Selectable IP rating 115 or 230 V ac.

General specifications

Dimensions

320 x 200 x 170mm with handles
320 x 135 x 170mm without handles.

Conformance

EMI/RFI
Electrical

Complies with 89/336/EEC
Complies with EN 61000-6-1,
EN61000-6-2

Operating Temp

-20 to +60 °C

CCU Supply Voltage

36 V dc and 240 V ac

RoHS

IP Rating

Complies with Directive 2002/95/EC
IP50

Weight

7.5 kg

Warranty

5 years



Ordering Information

ShaxX-DUAL-XX

Dual Channel SMPTE Hybrid Alternative Connection Kit.

Used in conjunction with 2 x Shax-CCU; Allows 2 x hybrid fibre enabled cameras to be connected to the CCU over standard fibre networks. Power is inserted into the hybrid cable.

Key /XX

Replace -XX with -ST for ST/PC connector(s)

Replace -XX with -FC for FC/PC connector(s)

Replace -XX with -SC for SC/PC connector(s).

N.B. ST is the standard preferred stock item. For alternatives contact the Sales Office.

Note:

Units are provided in Multi Camera format as the standard factory option. **An individual front panel switch for each channel allows user adjustment for Sony, Hitachi and Ikegami cameras.** All Shax and ShaxX units are currently compatible with the following

Sony HDC-900/950/1000/1500/1700/2500

Contact the Sales Office for HDC-4300 and F55 camera compatibility

Hitachi CU-HD1200 camera compatibility

Ikegami HDK-97GX